

8th Postgraduate Course on Childhood Craniopharyngioma



Wednesday, June 11th	
6:00pm	Welcome Reception at the Faculty Club, Benson Hotel

Thursday, June 12th at The Benson Hotel	
8:00-8:05am	Introduction and Welcome - Todd C. Hankinson
8:10-8:25am	The Postgraduate Course in Childhood Craniopharyngioma - Hermann Müller
8:30-8:35am	Introduction of Interactive Project: "Tracking Eye Gaze Patterns to Model Hypothalamic Involvement by ACP" - Eric Prince

Current Clinical Care of Childhood ACP	
8:35-8:50am	Histological Features of ACP - Angus Toland
8:55-9:10am	Clinical Imaging of Childhood ACP - David Mirsky
9:15-9:25am	Questions and Discussion

Surgical Strategies for Children with ACP	
9:25-9:40am	A Reappraisal of an Algorithm for Surgical Resection-What Is a Puget Grade 2 - Jeff Wisoff
9:45-10:00am	Surgical Innovations and Hypothalamic Functional Preservation Strategies - Lei Cao
10:00-10:15am	Break
10:15-10:30am	Endoscopic Endonasal Cyst Fenestration and Marsupialization in the Treatment of Cystic Adamantinomatous Craniopharyngioma - Jay Storm
10:35-10:50am	Endoscopic Transnasal Surgery for Craniopharyngiomas: A Single Team Experience of 1028 Patients - Songbai Gui
10:50-10:55am	Questions and Discussion
10:55-11:10am	Organoid Model of Childhood ACP - Laurens Verweij* (Virtual Presentation)
11:15-11:30am	Radiation for Craniopharyngioma: The Toronto Experience - Derek Tsang
11:35-11:50am	Oncological Care for Children with ACP - John Apps
11:55am-12:10pm	Endocrine Care for Children with ACP - Christina Chambers
12:15-12:30pm	Ophthalmological Care for Children with ACP - Emily McCourt
12:30-1:15pm	Lunch Break

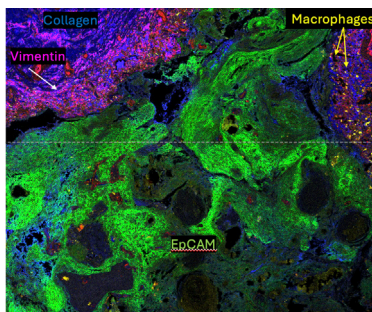
Current Clinical Research in ACP	
1:15-1:25pm	CONNECT Consortium - Holly Lindsay
1:30-1:40pm	PNOC/CBTN - Cassie Kline
1:45-1:55pm	ATPC - Todd Hankinson

Clinical Studies Regarding Hypothalamic Function	
2:00–2:15pm	Hypothalamic Syndrome after ACP Diagnosis: It's More Than Obesity – Sanne Hulsman*
2:20–2:35pm	Cognitive Function and Eating Behaviors in Youth with Craniopharyngioma – Ally Shapiro/Bailey Tanner*
2:40–2:55pm	Conducting Patient-Centered Research Using the Hypothalamic-Pituitary Brain Tumors Patient Registry – Nathalie Kayadjanian
3:00–3:15pm	Setmelanotide for Acquired Hypothalamic Obesity – Megan Kelsey
3:15–3:25pm	Questions and Discussion
3:25–3:35pm	Break

Basic Research in ACP	
In vitro models	
3:35–3:50pm	Culture Models of ACP – Siddhartha Mitra
3:55–4:10pm	Extracellular Matrix Features of ACP – Timothy H Chang*
In vivo models	
4:15–4:30pm	Genetically-Engineered Mouse Models of ACP – JP Martinez-Barbera
Artificial Intelligence Applications in ACP Research	
4:35–4:50pm	User Centered Artificial Intelligence to Support Diagnostic MRI Interpretation in Childhood Craniopharyngioma – Eric Prince*
4:50pm	Campus Tour (for those interested)

Friday, June 13th at The Benson Hotel	
8:00–8:15am	Proton Radiotherapy for Children with Craniopharyngioma – Thomas Merchant
8:20–9:00am	Round Table Discussion
9:05–10:00am	Group Breakouts A. Preclinical Modeling – Mitra/Martinez-Barbera B. Translational Clinical Trial Strategies – Lindsay/Kayadjanian C. Clinical Practice Guidelines and Approaches – Müller
10:05–10:35am	Summaries of Group Sessions 10:05–10:15 Group A 10:15–10:25 Group B 10:25–10:35 Group C
10:35–10:50am	Break
10:50–11:00am	Results: “Tracking Eye Gaze Patterns to Model Hypothalamic Involvement by ACP”
11:05am–12:00pm	How do We Combine These Plans into a Cohesive Strategy? Assign Roles
12:00pm	Close

***Young Researcher Presentation**



Interactive Project

Gaze-Based Artificial Intelligence for Imaging Diagnostics in Neuro-Oncology. All attendees are eligible and encouraged to participate.

\$500 Prize for the Winner

\$250 Prize for Second Place

**THE
BRAIN
TUMOUR
CHARITY**